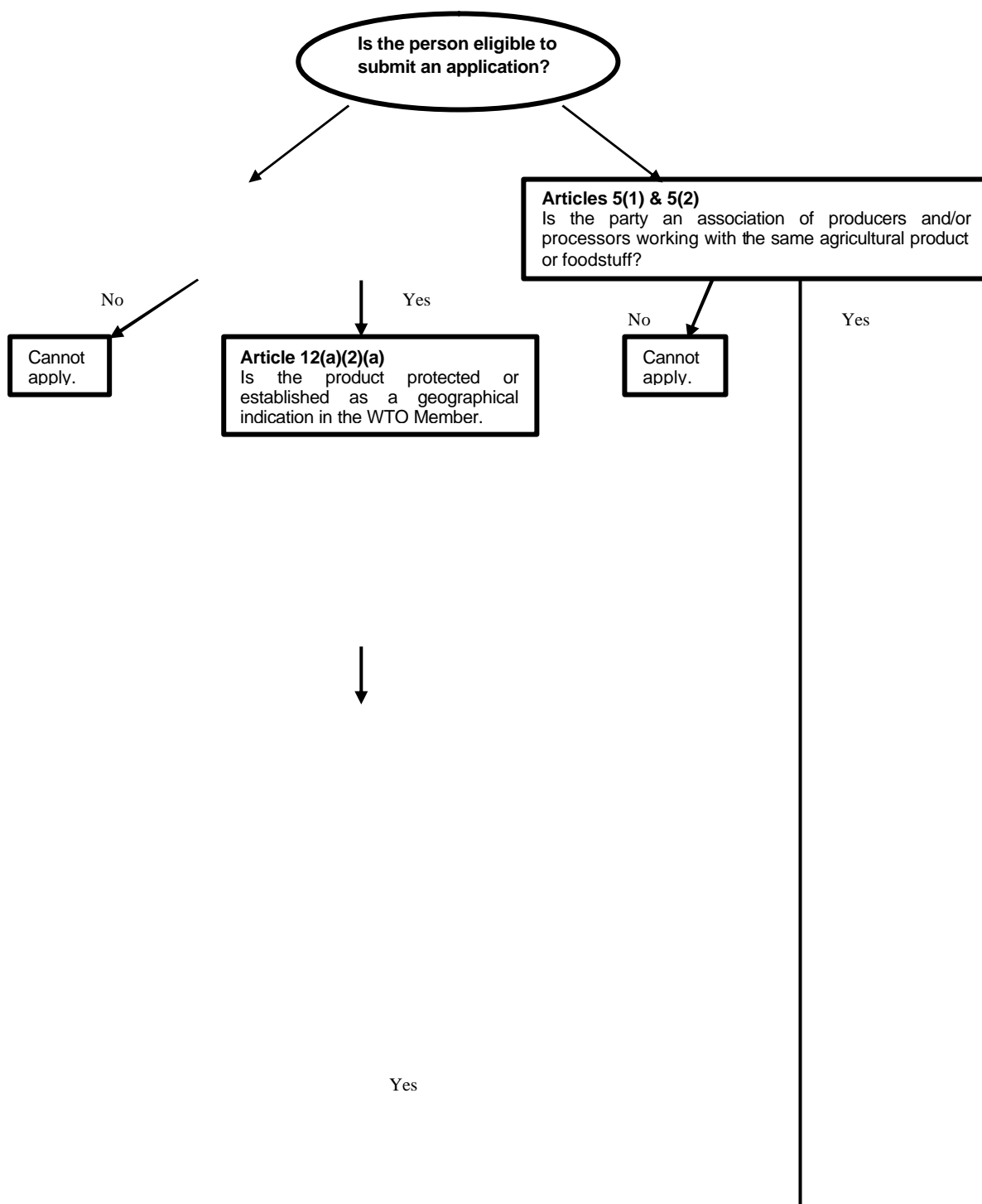


EXHIBIT NZ-1

**APPLICATION PROCESS FOR THE REGISTRATION
OF A GEOGRAPHICAL INDICATION UNDER EC REGULATION 2081/92¹**

WTO Member

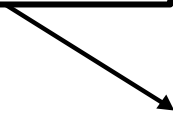
EC member State



¹ Note this flow-chart excludes procedures relating to homonymous names and the procedures applicable to third countries that are not WTO Members.


Article 12(a)(1)

The party submits the application to their WTO member government, with the product specification under Article 4.



Article 5(3)

The Party submits the application to their EC Member State with the product specification under Article 4.



Article 12(a)(2)

The WTO member Government submits the application to the European Commission including the following information:

- a copy of the registration application.
- description of the legal provisions and usage on basis the DOI or GI is protected or established in the country.
- a declaration the structures provided for in Article 10 that are established in their territory: ie the inspection procedures.
- other documents on which it based its assessment.



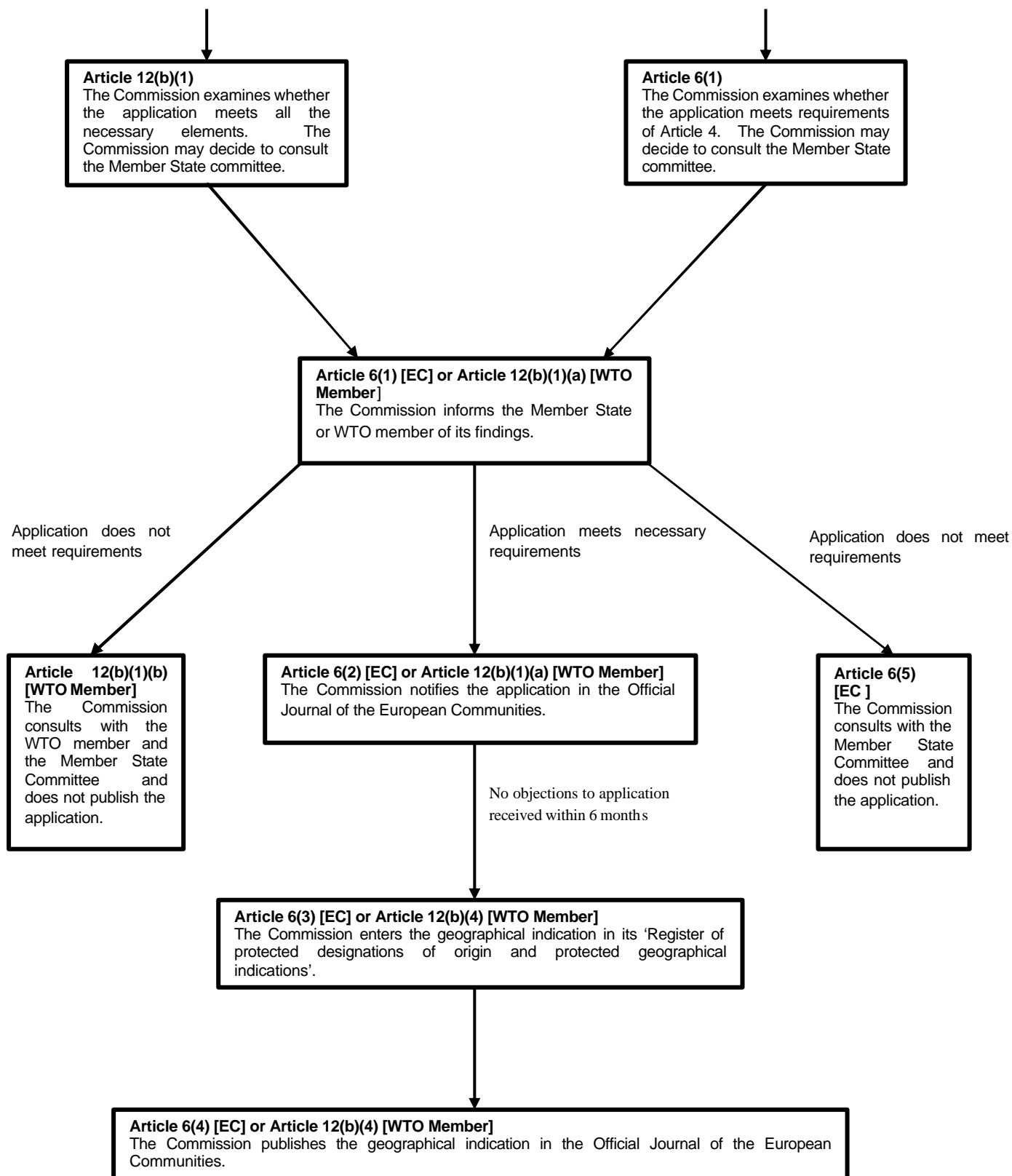
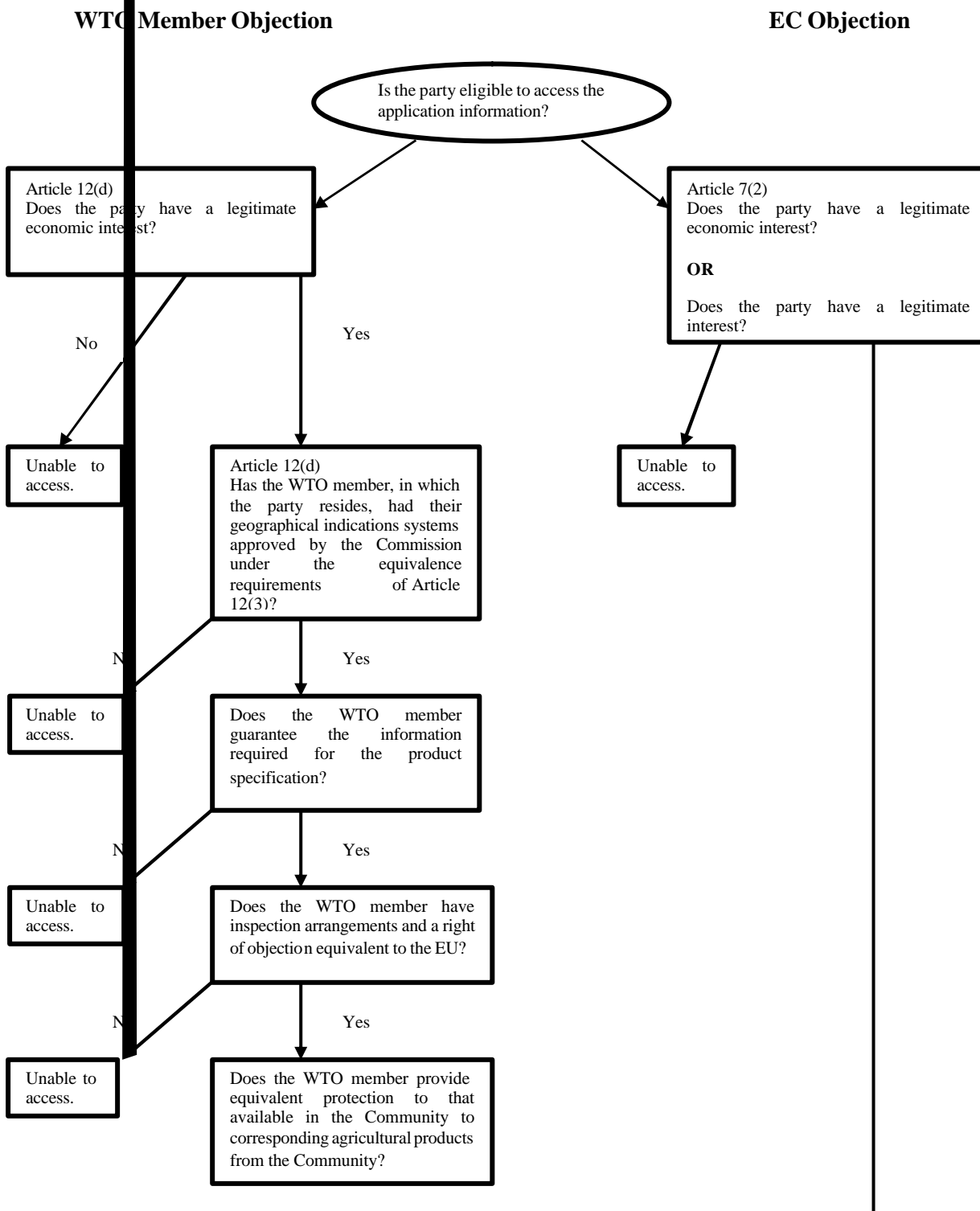


EXHIBIT NZ-2

**OBJECTION PROCESS DURING THE REGISTRATION OF A
GEOGRAPHICAL INDICATION UNDER EC REGULATION 2081/92²**



² Note, this flow-chart excludes homonymous names and the procedures for third countries that are not WTO Members.

Is the person eligible to object to an

